

Management of Fly-tipping in Leicester

Neighbourhood Services and Community Involvement
Scrutiny Commission
23rd January 2019

Management of fly-tipping



Examples of fly-tipping

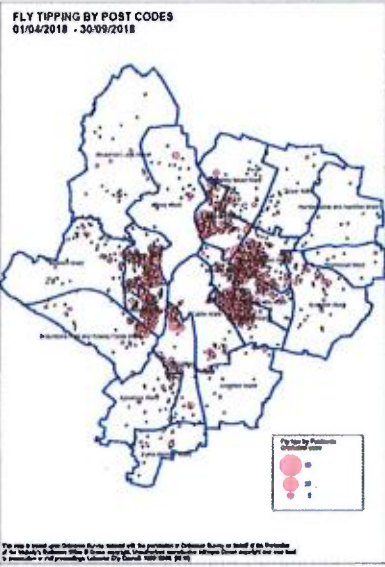
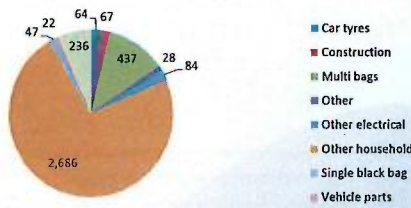


Data Analysis

	Car tyres	Construction	Multi bags	Other	Other electrical	Other household	Single black bag	Vehicle parts	White goods	Grand Total
Abbey	3	5	2			25			6	41
Aylestone	1	3	6			28	3		8	48
Beaumont Leys	2	3	5	1	2	19	1		1	34
Belgrave	6	5	57	4	11	289	2		19	393
Braunstone Park & Rowley Fields	1		16	2	3	99	2	1	7	131
Castle			11		1	42	1		6	61
Evington		3	5	3	9	74			6	100
Eyres Mansell		1	4		1	18	1		6	31
Fosse	7	4	113	5	2	352	1	1	49	534
Humberstone & Hamilton		2		1	1	7			2	13
Knighlton	3	3				9		1	2	16
North Evington	5	8	47	3	8	375	7	2	27	482
Rushey Mead	7	5	10	2	1	48	1	1	10	85
Saffron	3	4	37	2	2	129	8	2	7	194
Sploney Hills	8	7	19		18	195	5	4	10	266
Stoneygate	9	9	31	3	17	461	10	1	33	574
Thurcroft	1		3			3		1		9
Troon	1	4	4			18		2	4	33
Westlotes	1		31	1	1	270	3	1	19	327
Western	3		14		1	52		2	1	71
Wycliffe	5	4	22	1	6	173	2	3	13	228
Grand Total	64	67	437	28	84	2,686	47	22	236	3,671

Data Analysis

Fly-tips by volume type
01/04/2018 - 31/09/2018



Countywide Campaign

Leicester and Leicestershire
Fly-tipping campaign summary May to June 2018



In just 2 months (May to June 2018) we achieved:



Why do it?

Like many parts of the country fly-tipping in Leicester and Leicestershire increased to around 12,000 incidents in 2017. That is nearly 35 fly-tips every day.

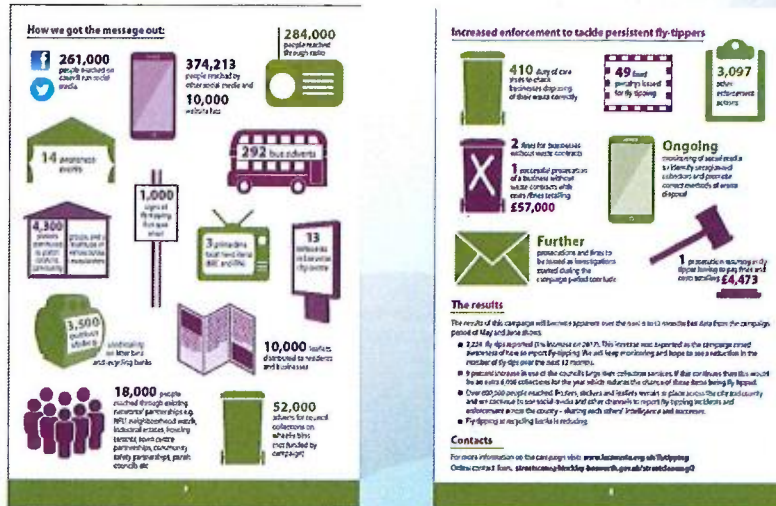
Councils have different resources and various approaches to tackle fly-tipping. There have been a number of campaigns over the years which have been successful but, putting forces has shown would be fly-tippers that Leicester and Leicestershire does not tolerate fly-tipping. By sharing reports and resources we were able to have a greater impact across the city and county.

Our solution:

A joint campaign to raise awareness amongst residents of their responsibilities about disposing of their waste and that we are working and enforcing fly-tipping. Funded by the Leicestershire Waste Partnership and Leicester City Council.



Countywide Campaign



Fosse Ward Intervention

For more information go to:
leicester.gov.uk/recycling
 f orangebags t orangebagsleics

What to do with your waste and recycling
 A guide for Leicester city residents

Latviešu valodā iekšpusē - 6
 Lietuvių kalba - 10
 Język Polski - 16
 Limba Romana - 20

You need to follow these instructions to keep pavements clear and avoid being fined.

Fosse Ward Intervention

Prosecutions

Businessmen fined £15,000 after 100 barrels of caustic soda dumped in Leicester street

DON'T BE MISLED BY A FAKE REVIEW

[Learn more >](#)

Which

Two business owners have been ordered to pay more than £15,000 between them after 100 barrels of caustic soda was dumped in a car-dec. The city council's environmental services were called to Thurmaston Boulevard, off Troon Way, Rushy Mead on February 15 this year. They were greeted by 100 blue, unsealed barrels containing a then unknown white chemical. Read more: Investigation in dumping of 100 barrels of unknown chemical in Leicester street. With the help of a public appeal in the Leicester Mercury, investigators traced the rubbish to business premises in Lorton Road, Humberstone. [read more](#)

DON'T BE MISLED BY A FAKE REVIEW

[Learn more >](#)

Which

ITV REPORT 3 Report 2018 at 5:26pm

Foot Locker fined £54,000 for dumping litter



Empty bags and boxes were left dumped on the floor by the multinational chain Credit: BFM

The sportswear firm, Freedom Sportslife Ltd, which runs Foot Locker stores across the UK, has been fined £54,000 after litter was found next to a charity shop and outside its shop in Leicester.

Over a 9 month period, there were various incidents of empty cardboard boxes being strewn across the floor.

Strategic Approach

- Intelligence led
- Targeting transient households with bespoke information
- Landlord related interventions
- Targeted interventions by area and by type
- Timely identification of new households and required service access arrangements